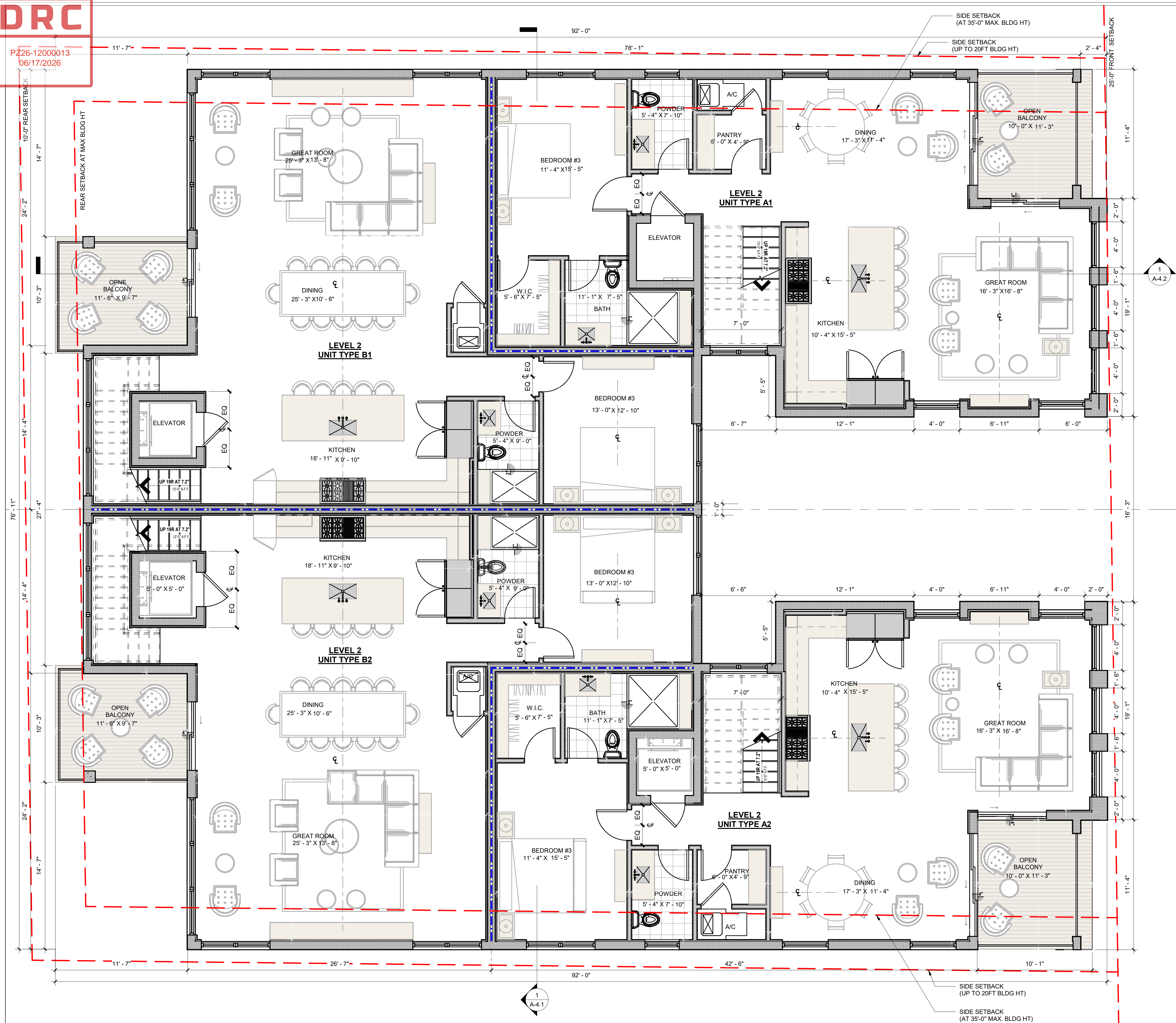





PZ26-12000013
06/17/2026

REVISIONS	BY	DAT
DRC SUBMITTAL	DD/EA	05.13.20



WALL LEGEND

-  TYPICAL 8" CMU WALL
-  TYPICAL 8" CMU WALL - FIRE RATED
-  TYPICAL 5" INTERIOR PARTITION NON RATED .
GYP. ON BOTH SIDES

SUSTAINABLE STANDARDS

EFFICIENT COOLING - 2 POINTS

ENERGY EFFICIENT EQUIPMENT
ALL AIR CONDITIONING UNITS SHALL BE ENERGY STAR®
QUALIFIED.

EFFICIENT WATER HEATING - 2 POINTS

A MINIMUM OF 75% OF THE DOMESTIC HOT WATER ON-SITE SHALL BE PROVIDED BY TANKLESS OR SOLAR WATER HEATING SYSTEMS.

HURRICANE RESISTANT STRUCTURES - 4 POINTS

THE PRINCIPAL BUILDING SHALL BE DESIGNED TO MEET ENHANCED WIND-LOAD REQUIREMENTS FOR A MINIMUM WIND SPEED OF 150 MPH.

PARKING STRUCTURE - 2 POINTS

AT LEAST 75% OF THE REQUIRED OFF-STREET PARKING SPACES SHALL BE LOCATED WITHIN ENCLOSED GARAGES, MEETING THE CRITERIA FOR STRUCTURED PARKING.

POMPAÑO BEACH
TOWNHOMES

3214 SE 11TH STREET
POMPANO BEACH, FL 33062

The logo for Stoff Architectural Group features a stylized graphic of several vertical bars of varying heights in shades of blue and teal, followed by the word "STOFF" in a large, bold, serif font, and "ARCHITECTURAL GROUP" in a smaller, sans-serif font below it.

ARCHITECTURAL GROUP

WWW.STOEET.COM

77

NAPI ES EI (239) 262-7677

99

CH EI 33444 (561) 243-0799

42 N SWINTON AVE DEI BAY

PROJECT #

FI-0011105 FIRM-AA003379

ALL IDEAS, DESIGNS, ARRANGEMENTS, & PLANS INDICATED OR REPRESENTED BY THIS DRAWING ARE OWNED BY, & THE PROPERTY OF THIS OFFICE & WERE CREATED, EVOLVED, & DEVELOPED FOR USE ON, & IN CONNECTION WITH THE SPECIFIC PROJECT. NONE OF SUCH IDEAS, DESIGNS, ARRANGEMENTS, & PLANS MAY BE USED BY OR FOR ANY OTHER PERSON, FIRM, OR CORPORATION FOR ANY PURPOSE, WHATSOEVER, WITHOUT THE WRITTEN PERMISSION OF RANDALL E. STOFFT, ARCHITECT. P.A. WRITTEN DIMENSIONS ON THESE DRAWINGS SHALL HAVE PRECEDENCE OVER SCALE DIMENSIONS. CONTRACTORS SHALL VERIFY & BE RESPONSIBLE FOR ALL DIMENSIONS & CONDITIONS OF THE SITE. THE CONTRACTOR SHALL BE RESPONSIBLE FOR VARIATIONS FROM THE DIMENSIONS AND CONDITIONS SHOWN IN THESE DRAWINGS. SHOP DETAILS OF ADEQUATE SCALE MUST BE SUBMITTED TO THIS OFFICE FOR APPROVAL BEFORE PROCEEDING WITH FABRICATION ON ITEMS SO NOTED. © 2024. ALL RIGHTS RESERVED.

A-2.2

1
A-2.2

2ND FLOOR OVERALL PLAN

1/4" = 1'-0"